



Blank EcoSteel

Convince yourself of our new protective barrier system **Blank EcoSteel**. This system meets high requirements in the field of personal safety.

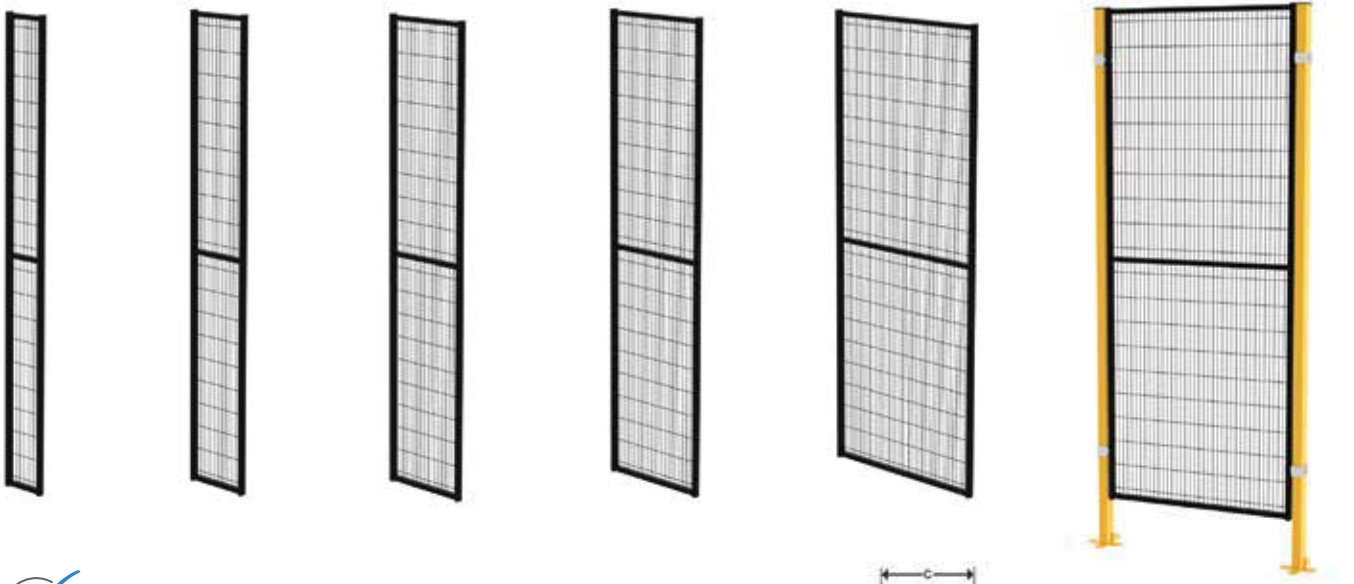
The advantage:

This protective fence withstands a load according to pendulum test according to **DIN EN ISO 14120:2016-05** of **1,950 joules** and significantly exceeds the applicable industry requirements of 1,550 joules.

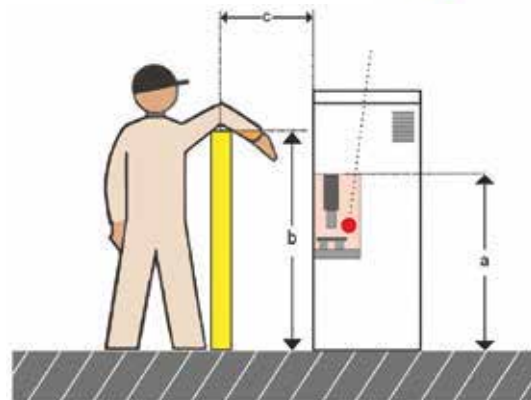


Fence panels and posts.

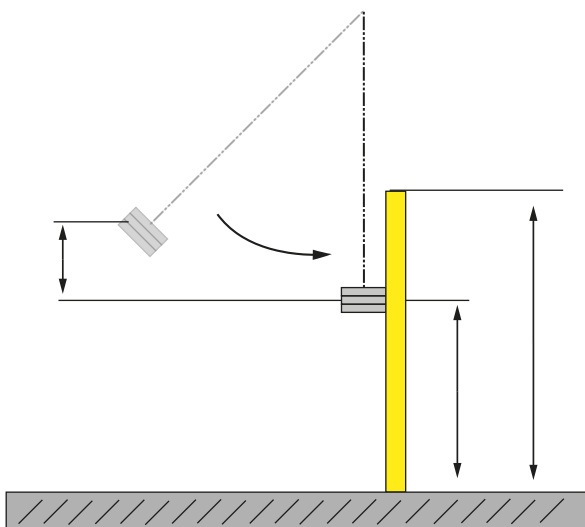
Available in various widths, heights, and designs.



- ✓ high security standard
- ✓ easy installation
- ✓ high quality
- ✓ available in many colors



Safety standard



Crashtest DIN EN ISO 14120:2016-05

Frame width: 1500 mm

Impact point: 1400 mm

Pendulum weight: 100 kg

Load energy: 1950 J

Speed: 20 km/h



Door elements

These models represent only a small selection of our wide range of door products. Our doors are available in various widths, heights, and designs.



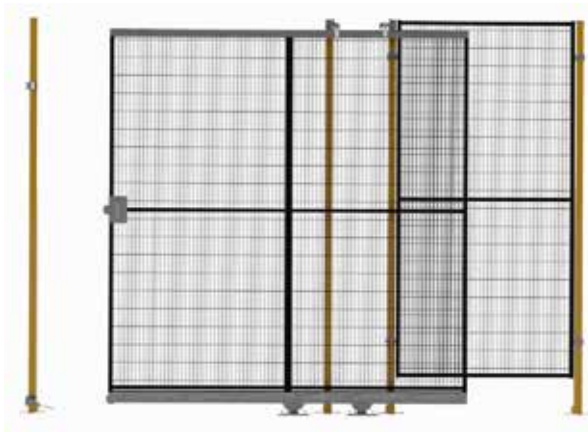
Single door

This door is used in the area for maintenance, repair, or configuration of technical equipment.



Double door

These doors are used in loading and unloading areas and tool change areas.



Sliding door

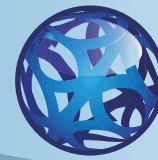
These doors are particularly suitable for the entrance area, as they have no limit in the upper area.



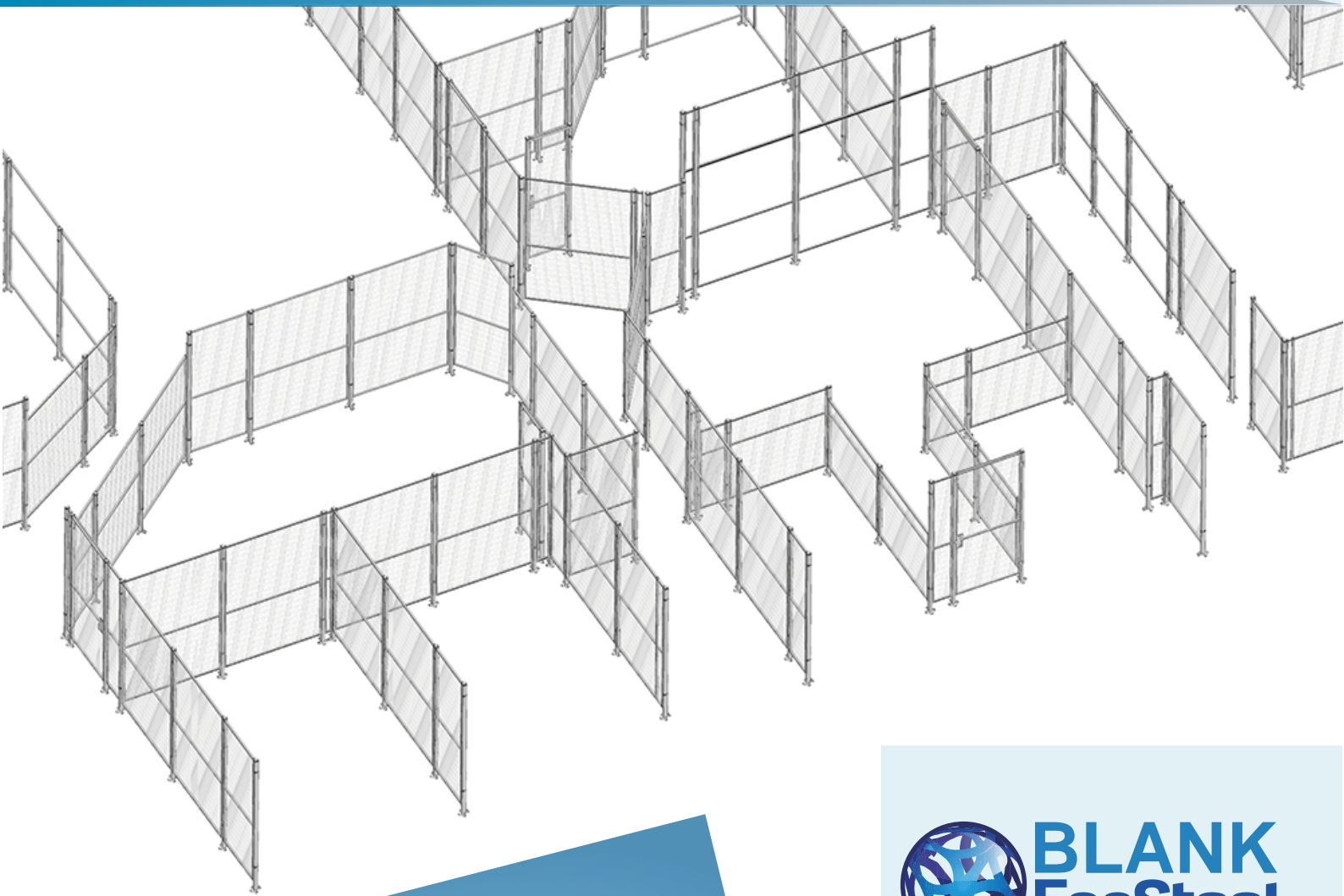
Telescopic sliding door with hinges

The hinges mounted on the back of the telescopic door allow it to open up to 90 degrees and create a more convenient loading and unloading area.





**BLANK
EcoSteel**
www.blank-ecosteel.com



You can find more
information at:

www.blank-mt.com



**BLANK
EcoSteel**
www.blank-ecosteel.com

Blank Metallbau-Technik GmbH

Max-Eyth-Str. 7-9
71088 Holzgerlingen
Germany

Tel.: +49 7031 73446-0
Fax: +49 7031 73446-79
E-Mail: info@blank-mt.com



Blank Metallbau-Technik



Tel.: 0 70 31/73 44 6-0 • Internet: www.blank-mt.com • eMail: info@blank-mt.com